

2852M PYRAMIDE

Square road/floor marker-lighting

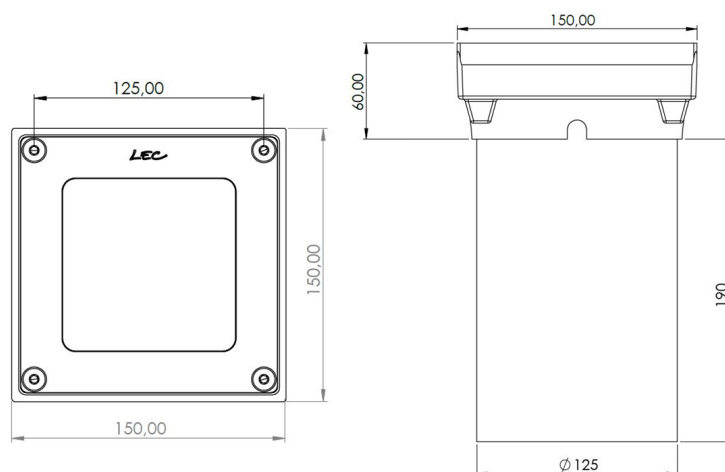
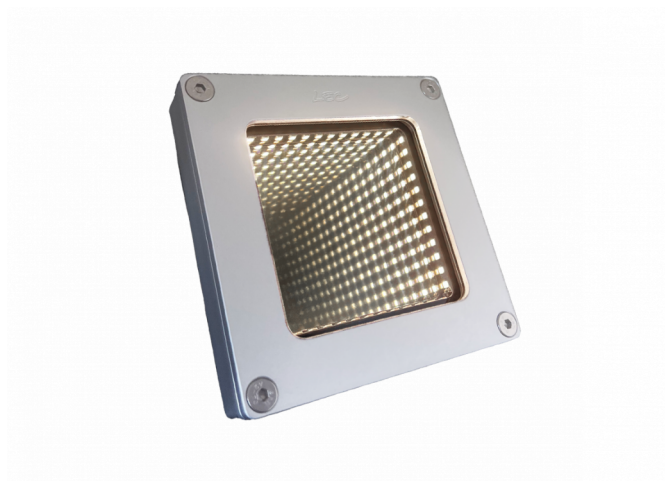
APPLICATIONS:

- Cycle paths and pedestrian paths marker lighting
- Signage for traffic island, pedestrian crossing
- Public space enhancement

CARACTERISTICS

Transparent flat window - Infinite mirror effect

- Colourless anodised machined aluminium body
- Vandalproof organic glass window
- 316L Stainless steel screws
- Flush-recessed
- 2 possible recess dimensions
- Non-steering



| | |
|----------------|--|
| Number of LEDs | 48 |
| Type of LEDs | 120° SMD LEDs (S) |
| Color(s) | Warm white 2700K (F), Warm white 3000K (E), Neutral white 4000K (N), Cool white 6000K (W), Red (R), Amber (O), Green (V), Blue (L) |

Select your specific requirements with our product configurator, by filtering technical criteria at the following link:

<http://www.lec-lyon.com/2852mz-pyramide-r2441>

APPLICATION

- ☒ Marker-lighting

CONFIGURATEUR.EMPLACEMENT

- ☒ Ground flush recessed fittings
- ☐ Ground recessed fittings

CARACTERISTICS

Weight : 1000 g

Options of luminous effects

- ☒ Non adjustable
- ☒ Inclined beam
- ☒ Transparent flat window
- ☒ Colour control system (optional)

Power supply - Control

- ☒ Cable length: 1 m
- ☒ Integrated : 24V-PWM
- ☒ Remote : 24V-0/10V, 24V-DMX, 24V-DALI

Material

- ☒ AL Anodised glazed aluminium
- ☒ PC 2 Vandalism-proof, scratch-proof, UV-proof, polycarbonate window, M2

Mechanical strength - Waterproofness

- IK10** Resists impacts up to IK10
- 20J**
- IP68** Tight for extended immersion